

MELE KALIKIMAKA

Arranged by
JAY ALTHOUSE

Words and Music by
R. ALEX ANDERSON

Slowly, somewhat freely,
in two (♩ = ca. 72)

4 5 7

13 **13** Light 2-beat (♩ = ca. 104)

18 22

23 30 6

36 38

40

44 46 2

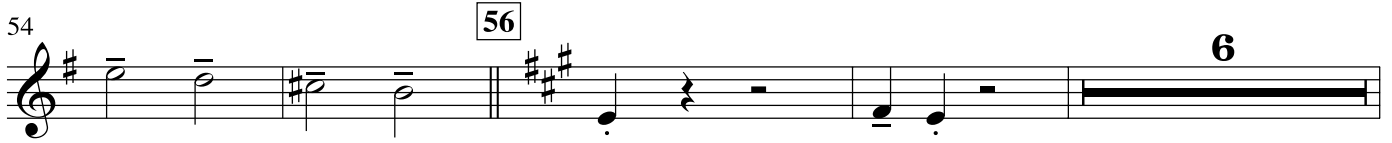
© 1949 (Renewed) LOVELY HULA HANDS MUSIC LLC
 All Rights Administered by LICHELLE MUSIC COMPANY
 This Arrangement © 2010 LOVELY HULA HANDS MUSIC LLC
 All Rights Reserved. Used by Permission. Printed in USA.
 Sole Selling Agent for This Edition: ALFRED MUSIC PUBLISHING CO., INC.
 To purchase a full-length performance recording of this piece, go to alfred.com/downloads

Trumpet 1

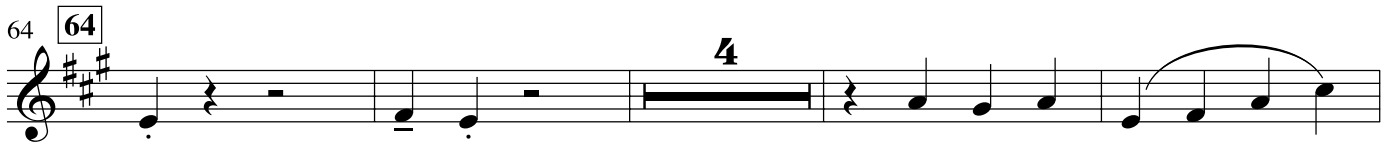
50



54



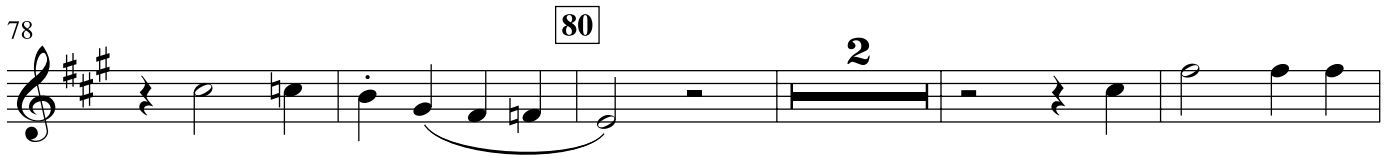
64



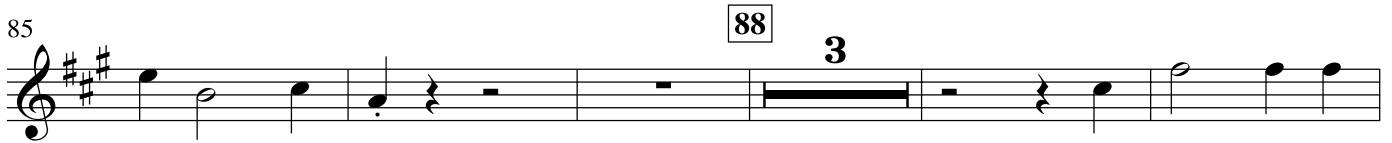
72



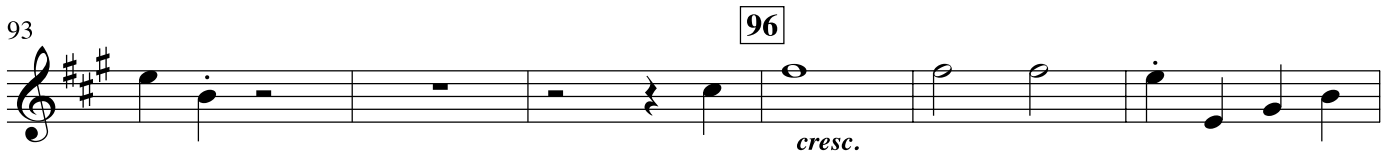
78



85



93



99

